

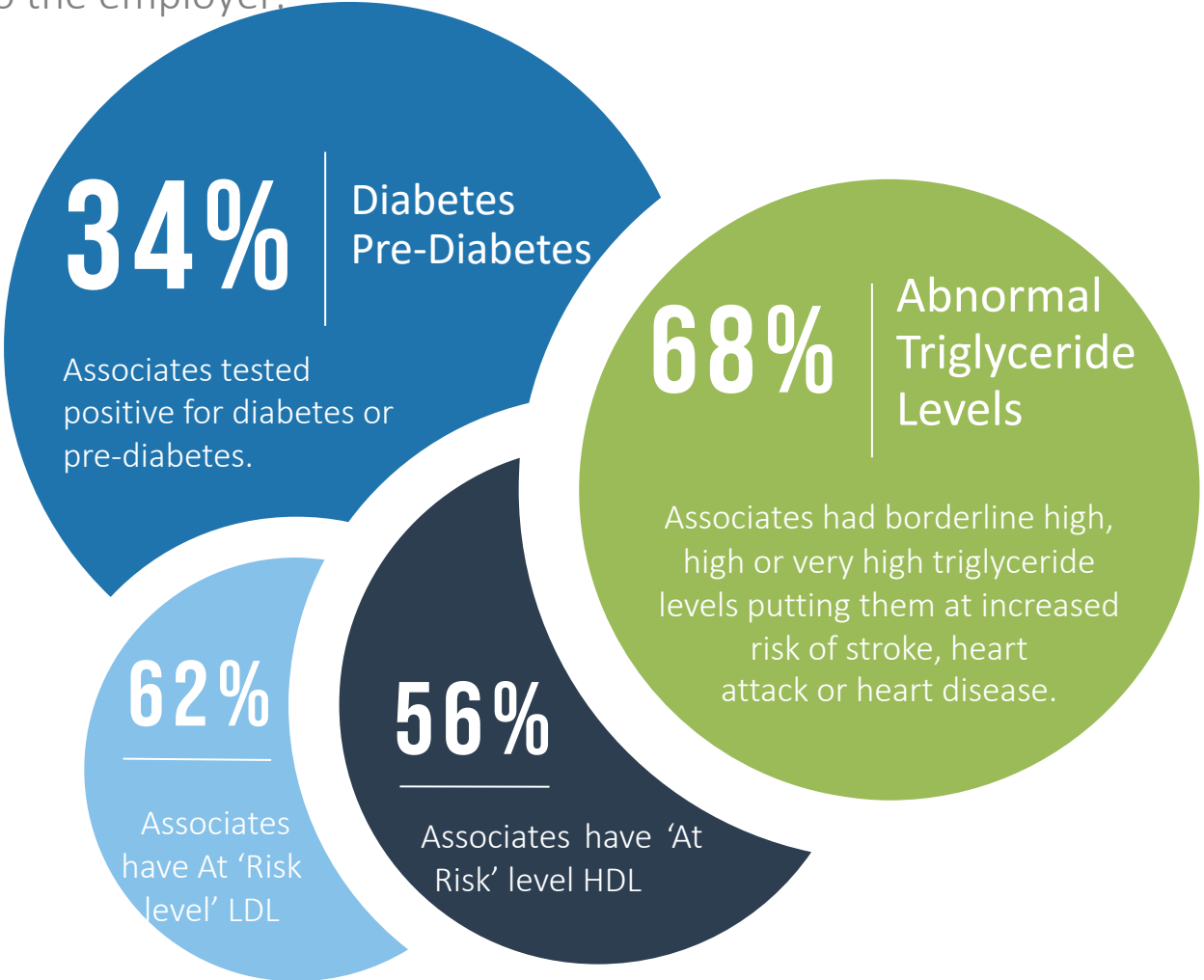
HealthRADAR[®]

Enrollment Data for
September 13, 2023
Health Fair by Marque
Medical



KEY INSIGHTS FOR SAMPLE EMPLOYER

If we can identify those with high risk factors, we can medically guide them to a healthier life which will improve their well-being and save on employer's downtime and absenteeism. The program is covered by insurance with no to little out of pocket cost to the employer.



A1C

25%

Males are pre-diabetic

20%

Females are pre-diabetic

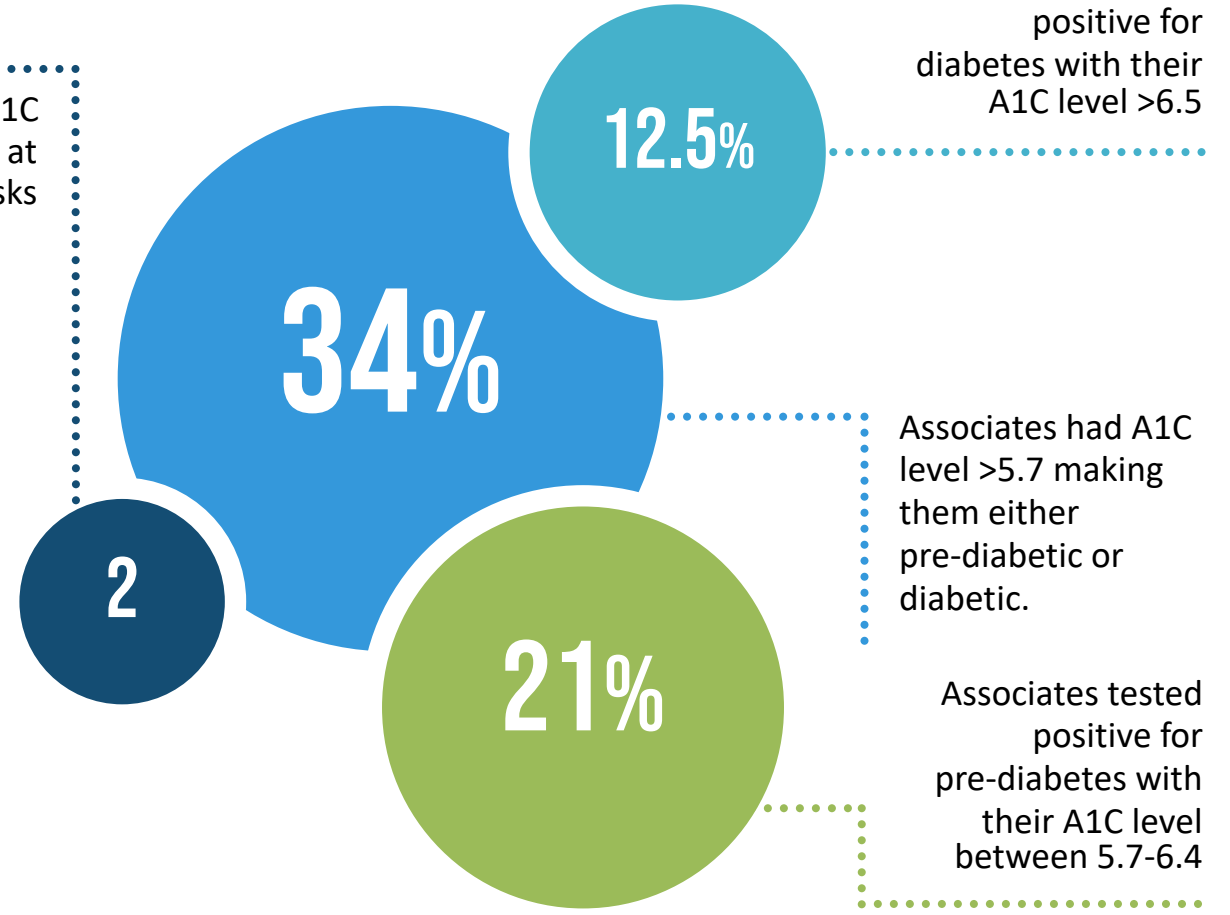
16%

Males are diabetic

10%

Females are diabetic

Two Associates had A1C level > 10 putting them at very significant health risks



21

ASSOCIATES

7

ASSOCIATES

4

ASSOCIATES



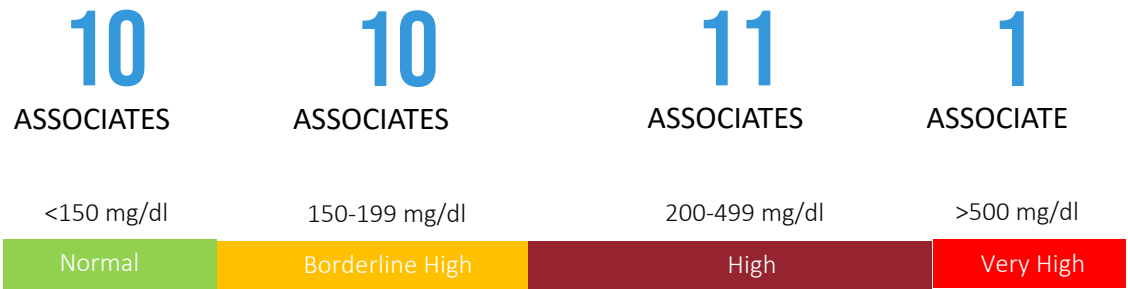
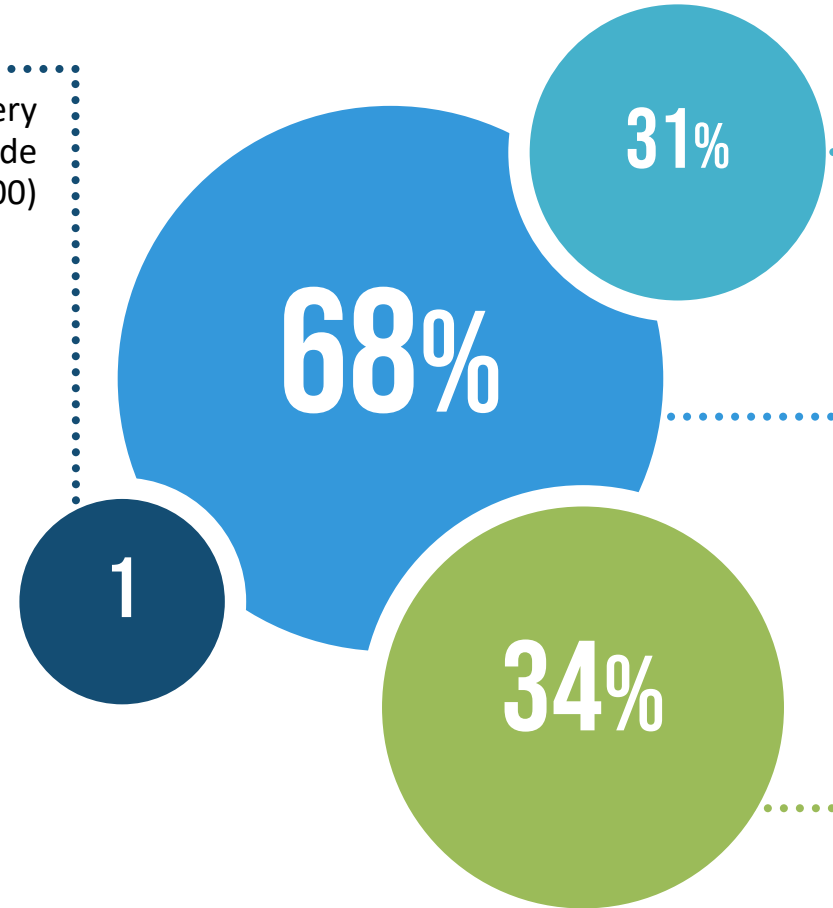
TRIGLYCERIDE

One Associate had very high levels of triglyceride (>500)

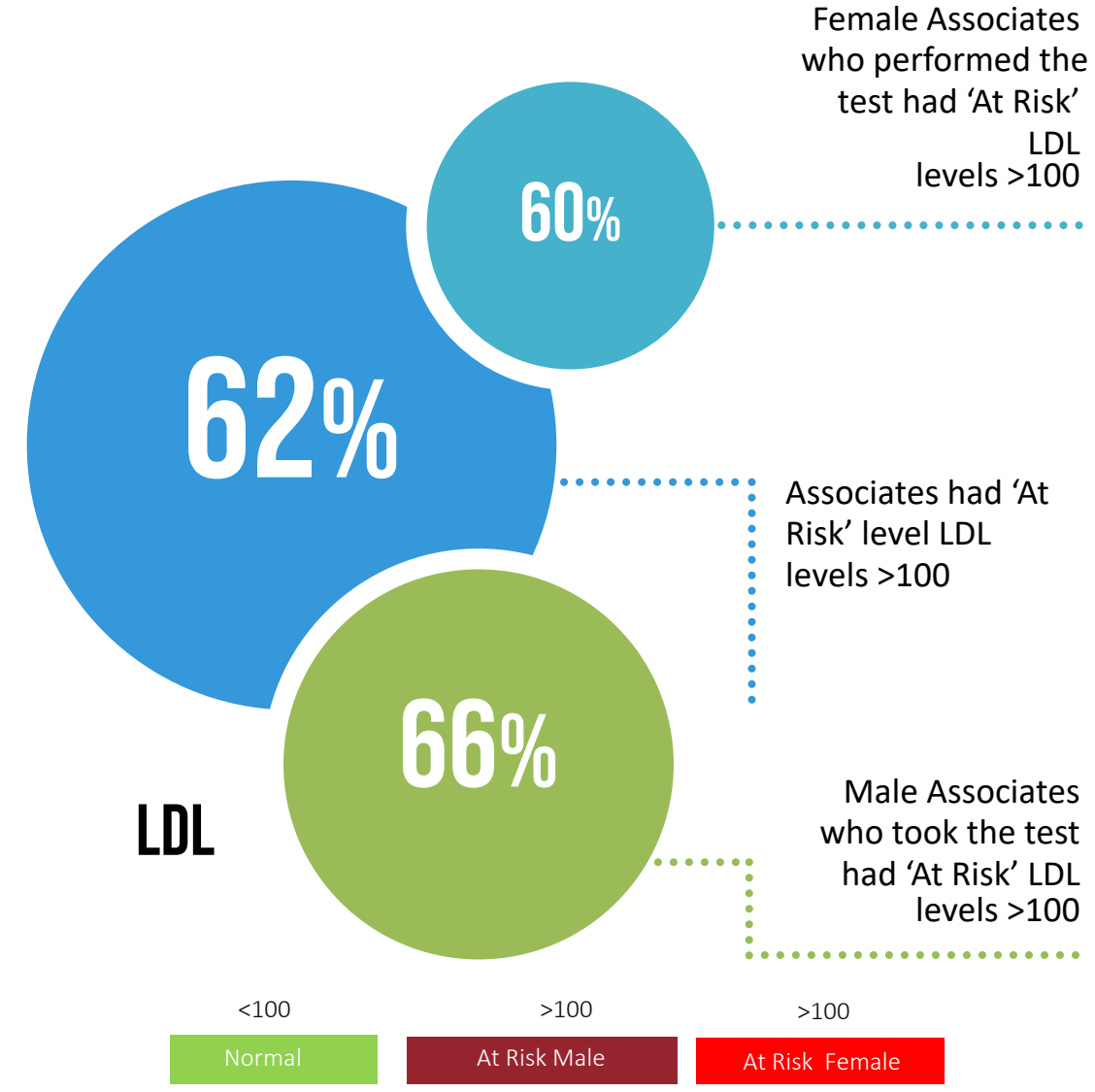
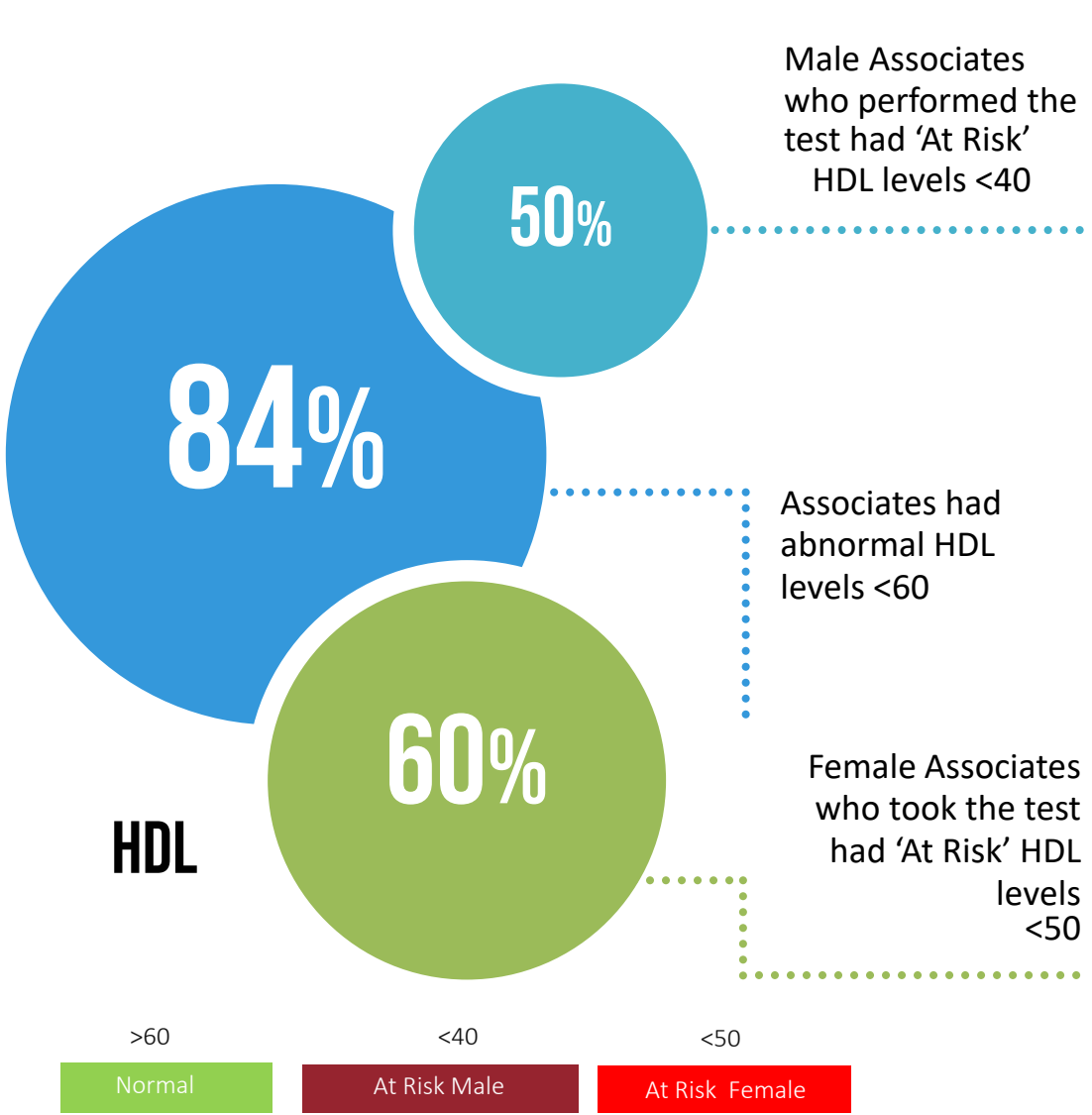
Associates had borderline high levels of triglyceride (150-199)

Associates had abnormal levels of triglyceride (>150)

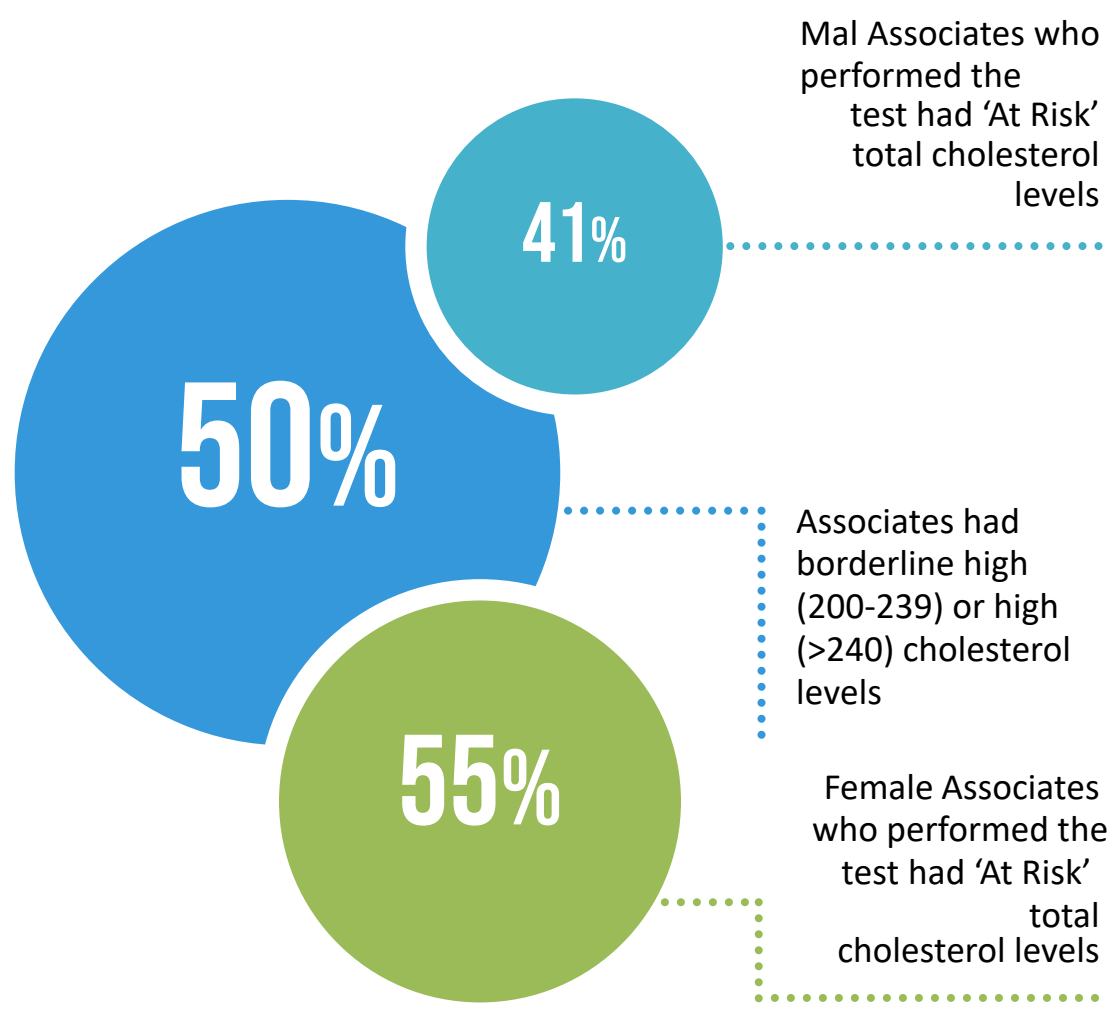
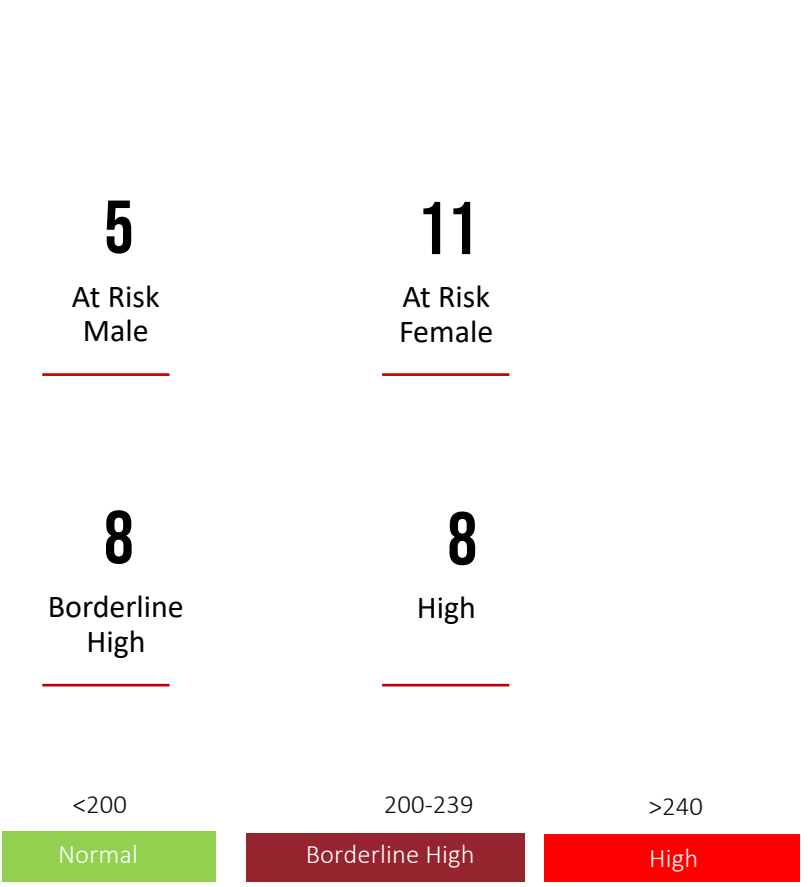
Associates had high levels of triglyceride (200-499)



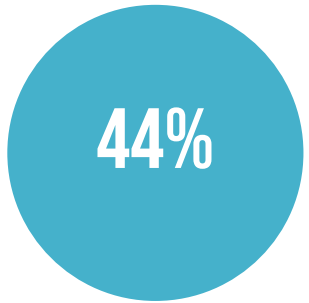
HDL-LDL



TOTAL CHOLESTROL

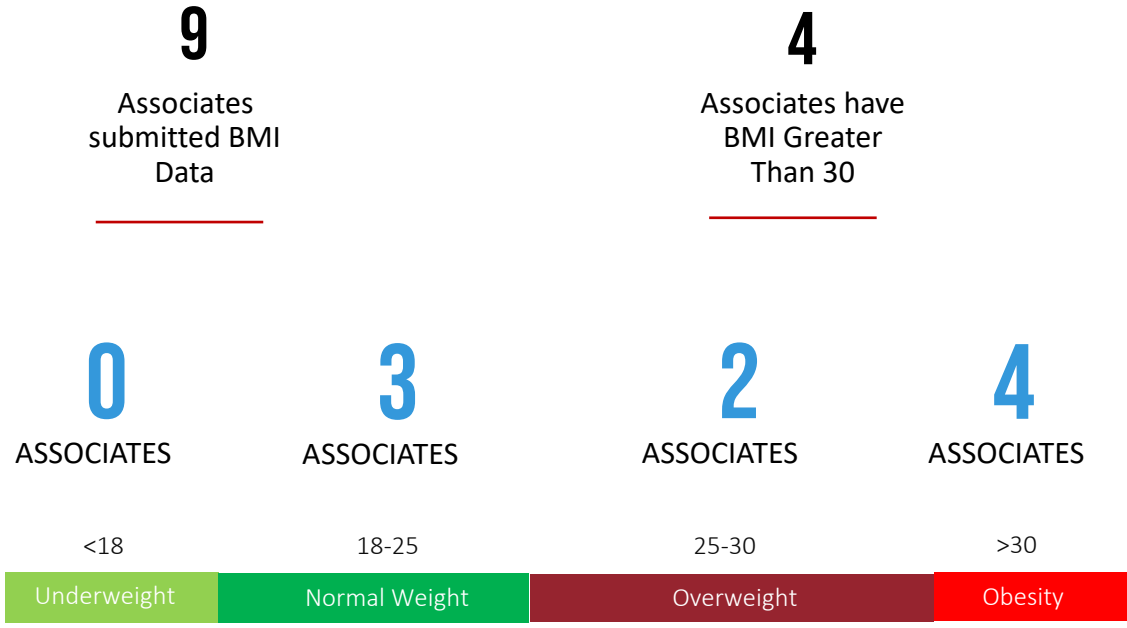


BMI



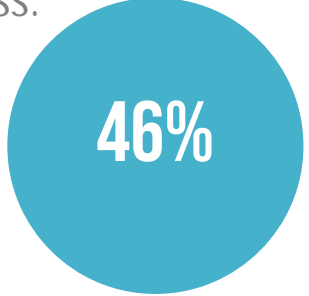
OBESITY

44 percent of Associates have BMI greater than 30



ENROLLMENT

By knowing these risk factors, the Associate can be medically guided by a Marque clinician to mitigate or eliminate these conditions. The Associate will provide a single blood sample as a marker of their current conditions. Those that are qualified to participate in the program will be provided a free take-home diagnostic kit and report their results via the Evolko app throughout the week. Marque clinicians will review their medical markets weekly and provide clinical guidance on their progress.



**ENROLLED
DURING HEALTH FAIR**

46 percent of Associates who performed tests during the Health Fair are already enrolled in the Marque HealthRADAR® Program

32

Associates performed health tests

15

Associates out of 32 are already enrolled in Marque HealthRADAR® Program